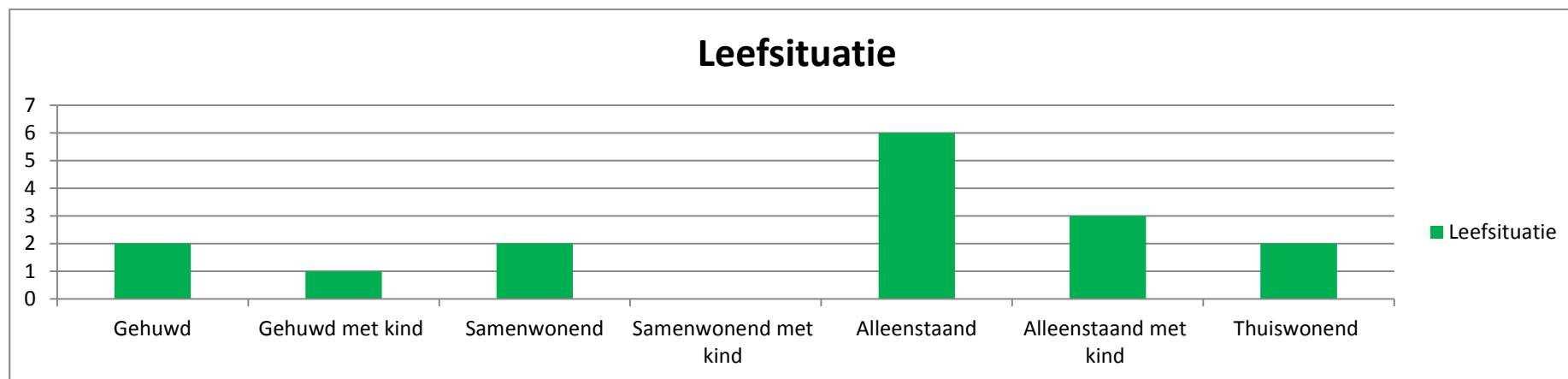
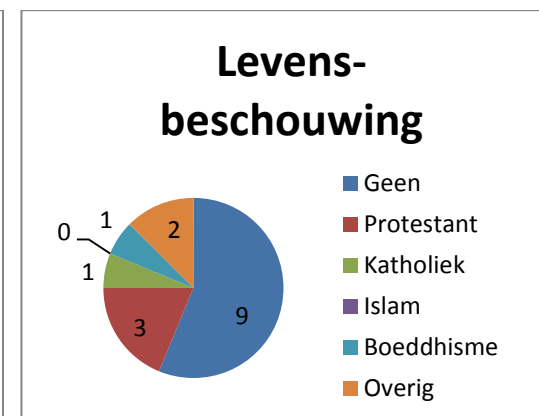
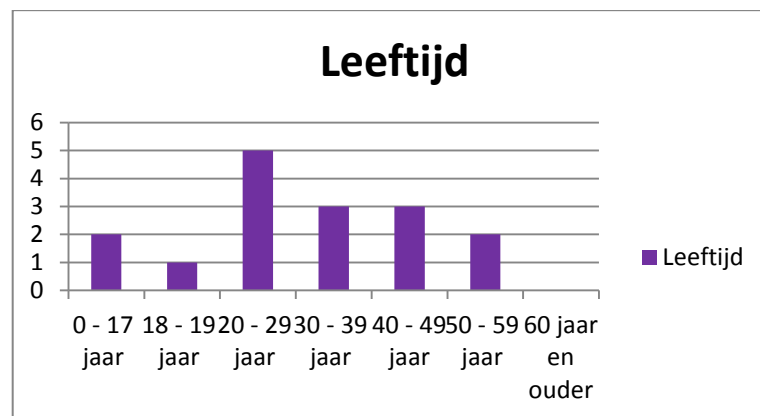
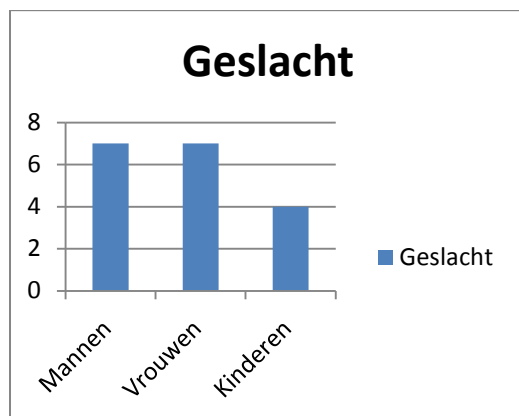


Crisisopvang: Registratiecijfers opgenomen, vertrokken en niet opgenomen cliënten

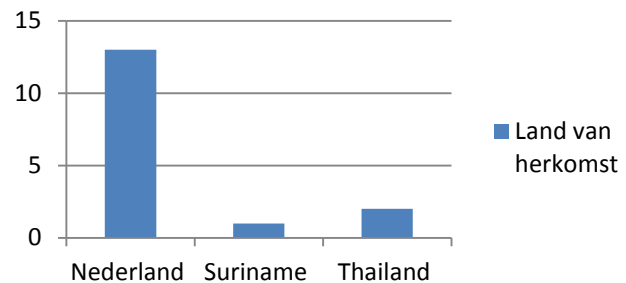
Totaal aantal opgenomen cliënten: 16

Totaal aantal vertrokken cliënten: 15

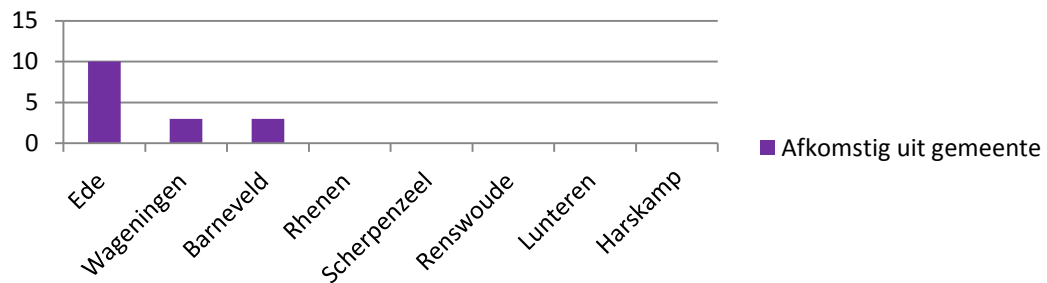
Specificatie opgenomen cliënten



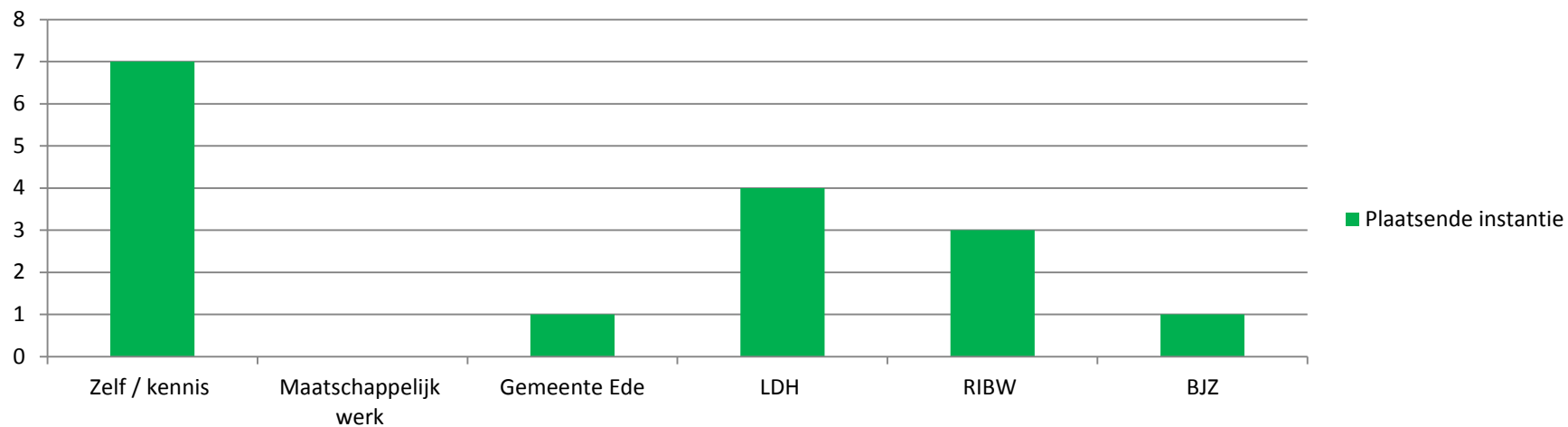
Land van herkomst



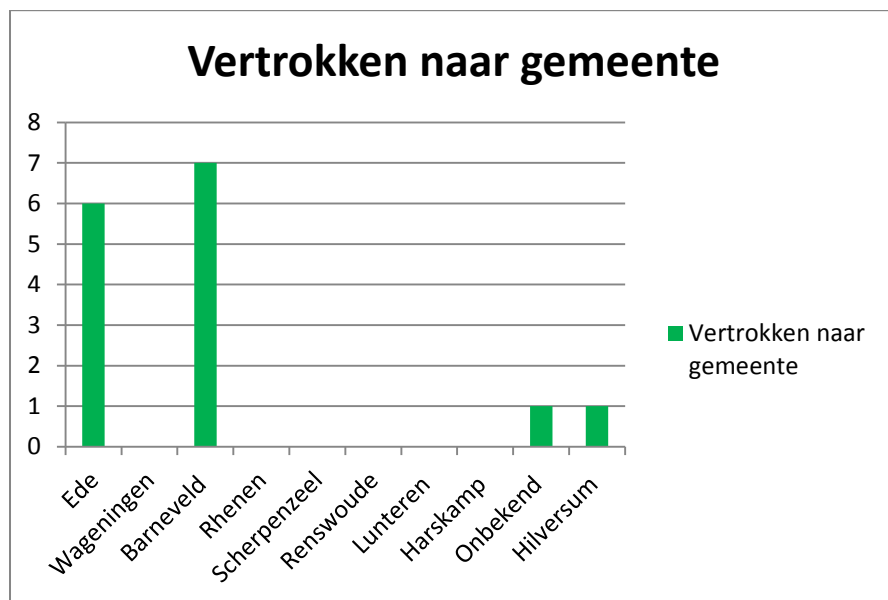
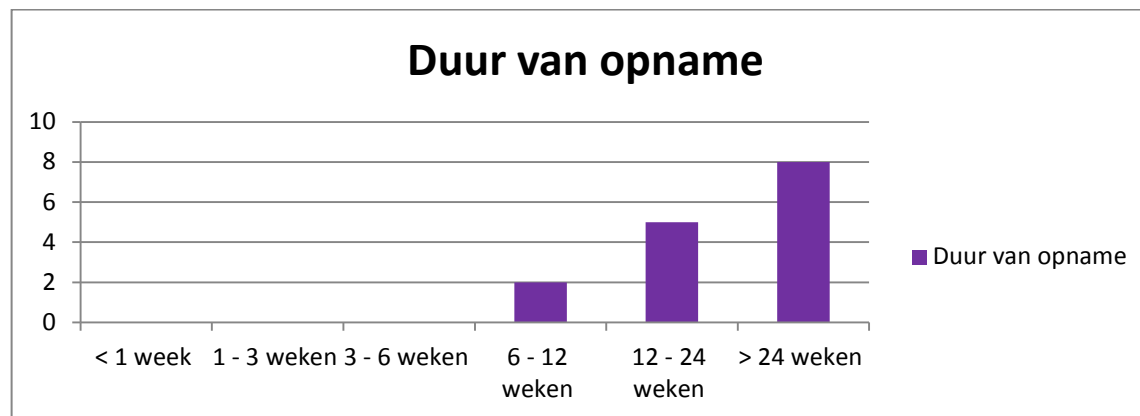
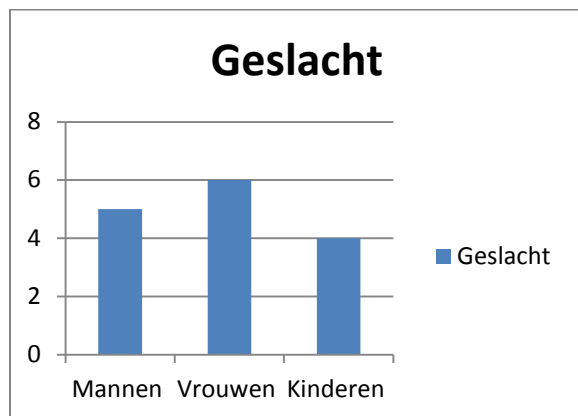
Afkomstig uit gemeente



Plaatsende instantie



Specificatie vertrokken cliënten



Specificatie niet opgenomen cliënten

